

The SIP Operating Committees are committed to increasing transparency by providing detailed information on the respective operations of the Consolidated Tape Association (“CTA”) and Unlisted Trading Privileges (“UTP”), including summaries of the General Sessions from the Operating Committees’ quarterly meetings, plan policies, quarterly and monthly performance metrics, pricing schedules, technical specifications, etc. In that regard, the SIPs are providing the following information to further increase transparency of public market data:

- Trade and quote revenue distributed to Participants for Tapes A, B and C, beginning in 2007
- Per trade and quote message revenue (in aggregate) distributed to Participants for Tapes A, B and C, beginning in 2007
- Revenue earned by fee type for Tapes A and B, beginning in 2009, and Tape C, beginning in 2007

Revenue data will be updated on a quarterly basis, with a 60 day lag, and will be retained on the Plan website. Market data revenue is allocated according to an allocation formula and rules promulgated under Regulation NMS. A summary of the Market Data Revenue Allocation Formula can be found [here](#).



Consolidated Tape Association

Tape A Trade & Quote Revenue Distributed to Participants

Exchange	2007			2008			2009			2010			2011			2012		
	Quoting	Trading	Total	Quoting	Trading	Total	Quoting	Trading	Total	Quoting	Trading	Total	Quoting	Trading	Total	Quoting	Trading	Total
CBOE BYX				1,307,335	1,049,147	2,356,482	11,291,004	8,572,600	19,863,603	\$ 185,057	\$ 90,650	\$ 275,707	\$ 2,911,899	\$ 1,954,956	\$ 4,866,855	\$ 3,290,510	\$ 2,586,989	\$ 5,877,499
CBOE BZX				28,861	50,946	79,808	156,727	71,163	227,890	7,960,569	6,631,713	14,592,282	7,846,449	6,385,664	14,232,112	8,004,744	6,498,207	14,502,951
CBOE CBSX	84,700	41,770	126,470							225,993	81,538	307,532	66,739	40,539	107,277	1,115,217	272,584	1,387,802
CBOE EDGA										1,636,372	1,273,434	2,909,806	3,398,590	2,725,075	6,123,665	2,230,421	1,847,646	4,078,067
CBOE EDGX										3,031,054	1,547,044	4,578,098	8,027,105	5,217,021	13,244,126	9,426,636	5,749,994	15,176,630
NASDAQ	20,796,595	16,306,075	37,102,670	25,681,720	22,000,807	47,682,527	19,637,214	15,836,643	35,473,856	18,423,044	13,813,681	32,236,725	16,957,934	12,595,192	29,553,126	15,571,558	11,142,419	26,713,976
NASDAQ BX	36,405	64,105	100,510				2,799,222	1,504,815	4,304,037	2,772,141	2,302,913	5,075,054	1,767,855	1,475,786	3,243,642	2,731,407	2,116,298	4,847,704
NASDAQ ISE	3,952,076	755,570	4,707,645	13,543,979	1,699,292	15,243,271	11,339,748	1,868,363	13,208,111	5,696,209	838,380	6,534,589						
NASDAQ PSX	48,057	47,500	95,557	105,337	28,661	133,998				251,655	71,223	322,878	1,316,988	352,838	1,669,827	1,836,282	376,713	2,212,996
NYSE	45,606,459	48,789,111	94,395,570	31,547,692	35,953,803	67,501,496	25,766,750	27,778,608	53,545,359	29,361,688	27,203,854	56,565,542	28,458,408	26,141,933	54,600,342	25,129,176	21,447,519	46,576,694
NYSE AMERICAN	274,132	77,794	351,926															
NYSE ARCA	16,711,428	13,561,084	30,272,512	20,429,004	16,495,860	36,924,864	19,465,963	14,099,721	33,565,684	17,469,892	11,727,169	29,197,061	15,037,447	10,364,154	25,401,601	13,384,008	9,109,251	22,493,259
NYSE CHICAGO	229,573	251,947	481,520	274,871	285,429	560,300	174,726	165,866	340,592	145,590	149,772	295,362	85,350	45,649	130,999	6,517	96,483	103,000
NYSE NATIONAL	4,286,809	404,368	4,691,177	5,926,642	1,154,898	7,081,540	1,512,284	592,872	2,105,156	2,329,359	575,801	2,905,160	2,601,355	514,135	3,115,490	1,892,336	289,158	2,181,494
FINRA ADF	3,643,726	1,748,419	5,392,145	2,034,121	732,739	2,766,861	1,578,308			187,037		69,062			256,098			
TRF-NASDAQ		10,694,576	10,694,576		13,493,720	13,493,720		22,209,580	22,209,580		21,414,061	21,414,061		18,610,851	18,610,851		20,613,051	20,613,051
TRF-NSX		193,771	193,771		1,924,676	1,924,676												
TRF-NYSE		2,733,872	2,733,872		6,009,585	6,009,585		489,460	489,460		1,885,367	1,885,367		1,972,924	1,972,924		2,472,501	2,472,501
Total Tape A	\$ 95,669,959	\$ 95,669,960	\$ 191,339,919	\$ 100,879,563	\$ 100,879,563	\$ 201,759,127	\$ 93,721,945	\$ 93,721,943	\$ 187,443,888	\$ 89,675,660	\$ 89,675,661	\$ 179,351,321	\$ 88,476,120	\$ 88,396,717	\$ 176,872,837	\$ 84,618,812	\$ 84,618,812	\$ 169,237,624
# of Messages	31,367,618,723	3,096,445,750		56,254,147,627	5,374,519,376		63,247,155,774	5,375,428,031		71,390,988,167	3,671,775,114		104,403,545,748	4,555,708,436		77,195,726,690	3,799,127,816	
Revenue/Message	\$ 0.0030	\$ 0.0309		\$ 0.0018	\$ 0.0188		\$ 0.0015	\$ 0.0174		\$ 0.0013	\$ 0.0244		\$ 0.0008	\$ 0.0194		\$ 0.0011	\$ 0.0223	

Exchange	2013			2014			2015			2016			2017			2018		
	Quoting	Trading	Total	Quoting	Trading	Total	Quoting	Trading	Total	Quoting	Trading	Total	Quoting	Trading	Total	Quoting	Trading	Total
CBOE BYX	\$ 2,092,082	\$ 1,635,099	\$ 3,727,182	\$ 3,318,033	\$ 2,477,405	\$ 5,795,437	\$ 4,142,257	\$ 3,412,623	\$ 7,554,880	\$ 4,277,367	\$ 3,535,368	\$ 7,812,735	\$ 4,943,568	\$ 4,229,255	\$ 9,172,823	\$ 4,879,889	\$ 3,984,179	\$ 8,864,068
CBOE BZX	7,323,226	5,713,900	13,037,125	7,039,455	5,386,165	12,425,620	7,670,939	5,806,016	13,476,954	7,312,892	5,222,273	12,535,164	7,621,881	5,152,991	12,774,872	8,743,633	5,685,198	14,428,831
CBOE CBSX	1,698,370	357,821	2,056,191	230,143	55,919	286,062												
CBOE EDGA	2,414,665	2,097,298	4,511,963	2,461,859	1,951,584	4,413,444	2,405,030	2,026,803	4,431,834	2,474,742	2,032,659	4,507,401	1,758,769	1,436,684	3,195,453	1,462,120	1,165,490	2,627,610
CBOE EDGX	10,540,360	6,169,298	16,709,658	8,457,670	4,675,711	13,133,381	7,568,678	4,758,028	12,326,706	7,621,608	4,711,566	12,333,174	7,921,221	4,510,647	12,431,869	7,906,648	4,549,276	12,455,923
IEX										600,501	537,514	1,138,015	1,534,423	2,226,555	3,760,977	2,249,947	2,718,058	4,968,005
NASDAQ	15,061,830	10,465,731	25,527,561	15,844,927	11,793,408	27,638,335	17,892,271	13,241,888	31,134,151	15,576,502	10,936,906	26,513,408	15,273,323	10,139,012	25,412,335	15,725,550	11,128,532	26,854,082
NASDAQ BX	3,152,682	2,116,404	5,269,086	3,111,869	2,084,854	5,196,723	3,290,352	1,828,038	5,118,390	3,382,177	2,337,252	5,719,428	4,876,965	3,471,055	8,348,019	5,127,444	3,431,478	8,558,922
NASDAQ PSX	1,173,833	263,718	1,437,551	889,155	334,986	1,224,141	1,963,938	728,808	2,692,745	1,755,287	558,363	2,313,650	1,063,574	464,692	1,528,265	929,336	433,948	1,363,284
NYSE	23,803,665	19,727,772	43,531,437	22,790,136	17,507,053	40,297,189	26,801,385	20,354,417	47,155,802	27,535,228	21,402,872	48,938,100	26,467,304	21,243,354	47,710,658	24,206,311	20,000,207	44,206,518
NYSE AMERICAN													99,930	39,359	139,290	316,545	159,291	475,835
NYSE ARCA	12,961,520	8,115,334	21,076,854	11,468,689	7,771,820	19,240,510	11,399,447	7,376,915	18,776,362	10,950,173	6,640,244	17,590,417	10,570,302	6,021,897	16,592,199	9,139,168	5,317,312	14,456,480
NYSE CHICAGO	8,191	110,850	119,041	12,835	108,054	120,889	11,147	121,287	132,434	31,320	106,912	138,232	185,561	114,190	299,751	230,975	123,626	354,601
NYSE NATIONAL	2,087,668	308,025	2,395,693	341,980	89,625	431,604	5	1	6	17,370	5,994	23,364	2,566	1,081	3,647	967,028	378,986	1,346,014
FINRA ADF				1,405,708	616,598	2,022,306	86,238	40,262	126,500									
TRF-NASDAQ CARTERET		22,636,403	22,636,403		19,924,281	19,924,281		20,695,763	20,695,763		20,890,078	20,890,078		21,792,419	21,792,419		20,794,023	20,794,023
TRF-NASDAQ CHICAGO																		2
TRF-NYSE		2,600,442	2,600,442		2,594,994	2,594,994		2,840,845	2,840,845		2,617,163	2,617,163		1,476,197	1,476,197		2,014,989	2,014,989
Total Tape A	\$ 82,318,092	\$ 82,318,093	\$ 164,636,185	\$ 77,372,458	\$ 77,372,457	\$ 154,744,915	\$ 83,231,687	\$ 83,231,686	\$ 166,463,372	\$ 81,535,166	\$ 81,535,165	\$ 163,070,331	\$ 82,319,387	\$ 82,319,388	\$ 164,638,775	\$ 81,884,594	\$ 81,884,593	\$ 163,769,187
# of Messages	71,784,019,015	3,823,391,804		79,093,674,844	5,028,885,746		86,185,986,505	5,384,439,280		97,526,648,969	5,673,875,575		72,412,227,177	4,977,926,985		98,172,020,696	5,554,498,588	
Revenue/Message	\$ 0.0011	\$ 0.0215		\$ 0.0010	\$ 0.0154		\$ 0.0010	\$ 0.0155		\$ 0.0008	\$ 0.0144		\$ 0.0011	\$ 0.0165		\$ 0.0008	\$ 0.0147	

Note: 2007 revenue are annualized figures from Q2 through Q4 results, as RAS methodology was implemented beginning 2007-Q2. 2007 messages include full year counts.



Consolidated Tape Association

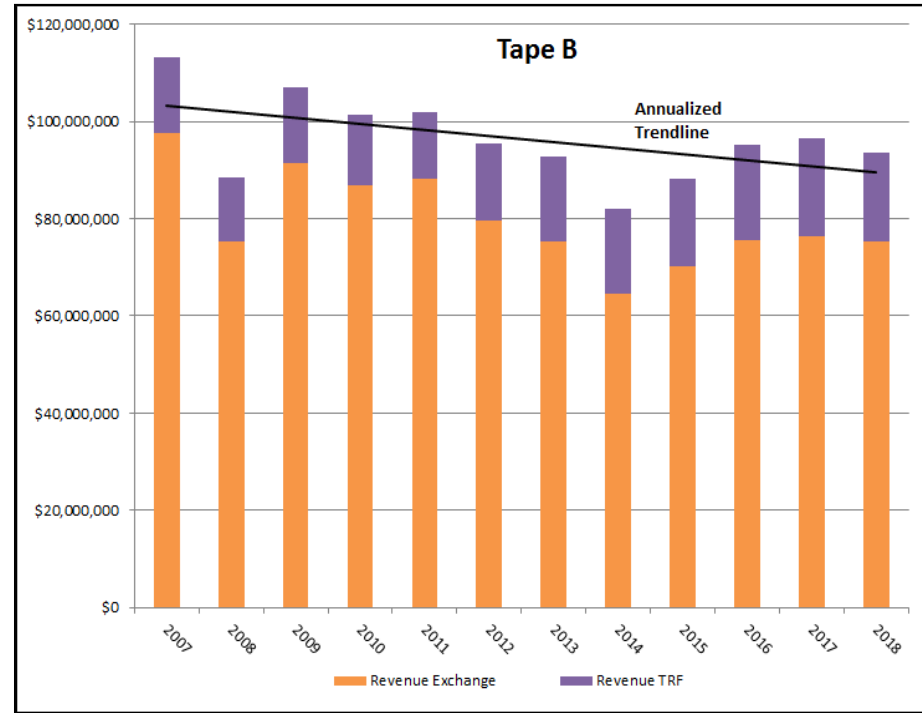
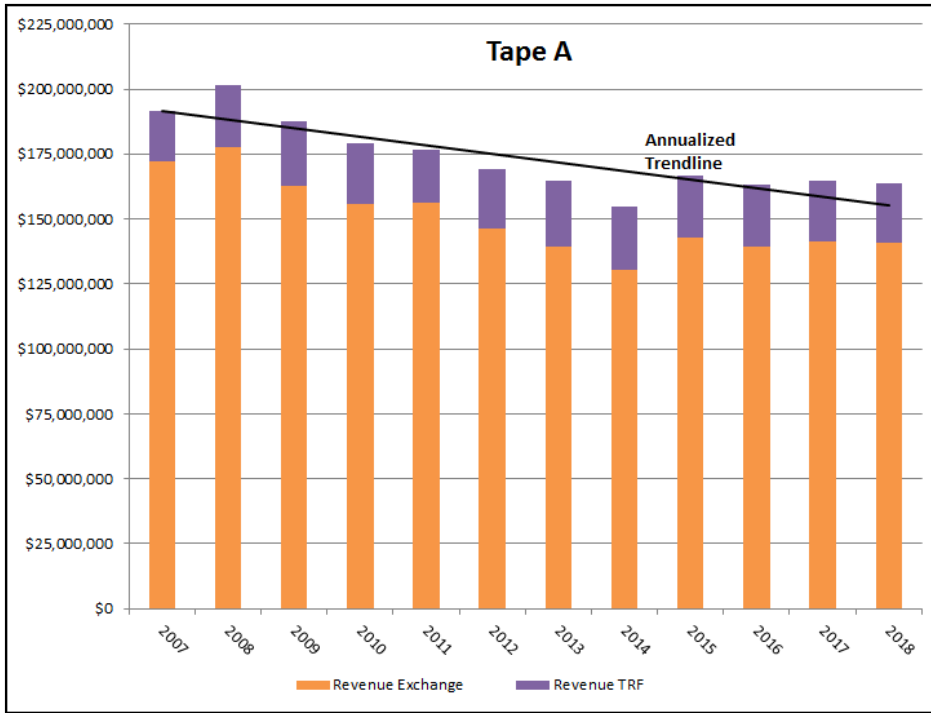
Tape B Trade & Quote Revenue Distributed to Participants

Exchange	2007			2008			2009			2010			2011			2012			
	Quoting	Trading	Total	Quoting	Trading	Total	Quoting	Trading	Total	Quoting	Trading	Total	Quoting	Trading	Total	Quoting	Trading	Total	
CBOE BYX							8,855,551	8,076,139	16,931,690	64,453	32,831	97,284	891,109	919,634	1,810,743	1,398,910	1,235,620	2,634,530	
CBOE BZX							722,267	208,138	930,406	9,558,864	7,793,638	17,352,502	8,736,293	6,844,525	15,580,819	7,758,492	5,485,616	13,244,108	
CBOE CBSX	645,819	159,939	805,758	578,868	162,499	741,367				423,750	216,169	639,919	349,292	206,050	555,342	280,723	278,462	559,184	
CBOE EDGA										836,084	646,244	1,482,328	2,443,205	1,854,806	4,298,011	2,071,495	1,543,856	3,615,351	
CBOE EDGX										2,149,601	1,209,882	3,359,483	5,580,609	3,323,245	8,903,855	4,937,527	3,184,063	8,121,590	
NASDAQ	17,437,859	18,302,531	35,740,390	13,247,963	13,627,662	26,875,625	13,342,093	11,793,455	25,135,548	11,650,166	9,572,987	21,223,154	11,011,841	8,914,308	19,926,149	10,249,315	7,363,250	17,612,565	
NASDAQ BX	2,175	6,373	8,548				1,288,312	748,859	2,037,170	1,374,955	1,248,373	2,623,328	711,791	939,457	1,651,248	1,213,476	1,281,539	2,495,015	
NASDAQ ISE	1,666,581	214,805	1,881,386	640,371	128,449	768,819	7,073,412	1,010,093	8,083,505	3,149,092	423,074	3,572,166							
NASDAQ PSX	10,550	21,270	31,820	19,267	8,583	27,850				167,628	39,279	206,907	1,330,616	493,735	1,824,351	2,338,272	485,429	2,823,711	
NYSE	227,993	137,032	365,025					8	8			41		41					
NYSE AMERICAN	9,908,489	7,563,683	17,472,172	5,178,027	3,029,331	8,207,357	1,311,677	1,007,456	2,319,133	1,081,990	930,725	2,012,715	972,913	901,328	1,874,242	885,746	734,447	1,620,194	
NYSE ARCA	19,274,957	17,389,566	36,664,523	14,954,663	13,814,636	28,769,299	18,188,813	14,993,245	33,182,059	18,086,185	13,567,584	31,653,768	16,369,587	12,486,777	28,856,364	14,216,657	9,949,060	24,165,717	
NYSE CHICAGO	75,093	134,269	209,362	291,349	63,502	354,851	1,120,140	151,916	1,272,056	860,213	148,367	1,008,580	1,193,739	174,509	1,368,249	822,438	141,797	964,235	
NYSE NATIONAL	4,181,454	315,248	4,496,702	8,619,934	993,411	9,613,345	1,070,251	448,113	1,518,364	1,250,012	419,803	1,669,815	1,371,422	224,608	1,596,031	1,547,965	166,209	1,714,174	
FINRA ADF	3,214,066	1,763,526	4,977,592	729,297			587,393	130,009	717,403	78,857		102,618							
TRF-NASDAQ		7,755,429	7,755,429		6,102,551	6,102,551		14,843,106	14,843,106			14,024,283			13,083,291			14,962,137	14,962,137
TRF-NSX		197,874	197,874		1,199,512	1,199,512													
TRF-NYSE		2,683,493	2,683,493		4,951,567	4,951,567		149,371	149,371		434,809	434,809		596,144	596,144		909,540	909,540	
Total Tape B	\$ 56,645,037	\$ 56,645,038	\$ 113,290,075	\$ 44,259,738	\$ 44,259,738	\$ 88,519,476	\$ 53,559,909	\$ 53,559,910	\$ 107,119,819	\$ 50,731,849	\$ 50,731,850	\$ 101,463,699	\$ 50,962,418	\$ 50,962,418	\$ 101,924,836	\$ 47,721,026	\$ 47,721,026	\$ 95,442,052	
# of Messages	5,713,455,286	536,577,737	22,366,788,497	1,418,622,697			30,884,941,667	2,035,819,422		41,957,044,166	1,390,600,162		61,540,607,186	2,174,729,819		39,892,597,216	965,448,833		
Revenue/Message	\$ 0.0099	\$ 0.1056	\$ 0.0020	\$ 0.0312			\$ 0.0017	\$ 0.0263		\$ 0.0012	\$ 0.0365		\$ 0.0008	\$ 0.0234		\$ 0.0012	\$ 0.0494		

Exchange	2013			2014			2015			2016			2017			2018		
	Quoting	Trading	Total	Quoting	Trading	Total	Quoting	Trading	Total	Quoting	Trading	Total	Quoting	Trading	Total	Quoting	Trading	Total
CBOE BYX	\$ 1,170,283	\$ 1,001,112	\$ 2,171,396	\$ 1,558,372	\$ 1,427,451	\$ 2,985,823	\$ 2,081,342	\$ 2,102,617	\$ 4,183,959	\$ 2,487,341	\$ 2,493,724	\$ 4,981,065	\$ 2,381,904	\$ 2,628,566	\$ 5,010,470	\$ 2,046,547	\$ 2,464,748	\$ 4,511,295
CBOE BZX	7,958,331	4,777,614	12,735,945	6,995,665	3,992,681	10,988,345	6,754,066	3,708,895	10,462,961	6,889,697	3,766,994	10,656,691	6,630,153	3,494,585	10,124,738	6,877,797	3,953,126	10,830,924
CBOE CBSX	316,132	301,596	617,728	63,906	80,702	144,608												
CBOE EDGA	1,834,374	1,732,551	3,566,925	2,114,088	1,470,790	3,584,878	2,538,472	1,521,060	4,059,531	2,807,541	1,629,384	4,436,925	2,315,127	1,245,019	3,560,146	1,739,738	953,513	2,693,251
CBOE EDGX	5,156,462	3,341,666	8,498,128	4,991,575	2,759,577	7,751,152	5,816,776	3,490,275	9,307,051	6,658,930	3,788,876	10,447,805	6,262,018	3,205,669	9,467,687	5,687,315	2,914,128	8,601,442
IEX										437,611	199,032	636,643	1,349,589	803,347	2,152,936	1,005,026	741,980	1,747,006
NASDAQ	9,262,933	5,772,955	15,035,887	7,463,908	4,525,691	11,989,599	7,435,737	4,437,104	11,872,841	7,145,731	4,310,659	11,456,390	7,332,777	4,390,318	11,723,094	7,422,339	5,180,061	12,602,401
NASDAQ BX	1,228,195	1,207,501	2,435,696	1,319,889	1,175,848	2,495,737	1,549,308	1,148,873	2,698,182	1,778,557	1,356,795	3,135,352	1,710,968	1,524,688	3,235,656	1,504,526	1,313,572	2,818,098
NASDAQ PSX	2,039,683	423,298	2,462,981	1,331,753	273,233	1,604,986	1,702,310	405,490	2,107,800	2,191,965	576,235	2,768,201	2,367,922	615,516	2,983,438	2,316,582	576,751	2,893,334
NYSE																782,998	517,510	1,300,508
NYSE AMERICAN	642,957	571,058	1,214,015	655,995	477,039	1,133,035	655,570	430,240	1,085,810	633,907	437,814	1,071,721	794,425	470,899	1,265,324	669,661	415,304	1,084,965
NYSE ARCA	14,382,363	9,481,221	23,863,585	12,245,115	8,389,325	20,634,440	13,322,526	8,879,806	22,202,332	14,047,669	9,401,243	23,448,912	15,135,246	9,490,976	24,626,222	14,193,218	8,964,985	23,158,203
NYSE CHICAGO	824,646	134,830	959,476	904,648	119,907	1,024,554	2,187,011	154,763	2,341,774	2,472,424	186,240	2,658,664	2,011,800	196,833	2,208,632	2,338,993	201,760	2,540,753
NYSE NATIONAL	1,632,510	231,482	1,863,992	281,492	54,166	335,658		1	1	16,799	4,307	21,106	2,912	686	3,598	275,846	253,685	529,531
FINRA ADF		3	3	1,154,958	376,807	1,531,765	92,028	40,191	132,219									
TRF-NASDAQ CARTERET		16,209,699	16,209,699		14,385,081	14,385,081		16,287,167	16,287,167		17,558,718	17,558,718		18,471,018	18,471,018		16,147,266	16,147,266
TRF-NASDAQ CHICAGO																		
TRF-NYSE		1,262,285	1,262,285		1,573,065	1,573,065		1,528,665	1,528,665		1,858,152	1,858,152		1,756,722	1,756,722		2,262,198	2,262,198
Total Tape B	\$ 46,448,869	\$ 46,448,870	\$ 92,897,739	\$ 41,081,363	\$ 41,081,363	\$ 82,162,726	\$ 44,135,145	\$ 44,135,146	\$ 88,270,292	\$ 47,568,172	\$ 47,568,172	\$ 95,136,344	\$ 48,294,841	\$ 48,294,841	\$ 96,589,682	\$ 46,860,586	\$ 46,860,587	\$ 93,721,172
# of Messages	33,017,131,014	882,558,056	40,532,480,205	1,297,943,845			46,812,487,725	1,519,658,113		58,157,519,952	1,750,903,592		40,392,509,168	1,649,964,231		73,748,160,004	3,581,323,902	
Revenue/Message	\$ 0.0014	\$ 0.0526	\$ 0.0010	\$ 0.0317			\$ 0.0009	\$ 0.0290		\$ 0.0008	\$ 0.0272		\$ 0.0012	\$ 0.0293		\$ 0.0006	\$ 0.0131	

Note: 2007 revenue are annualized figures from Q2 through Q4 results, as RAS methodology was implemented beginning 2007-Q2. 2007 messages include full year counts.

CTA Plan Trade & Quote Revenue Distributed to Participants



Note: 2007 revenue are annualized figures from Q2 through Q4 results, as RAS methodology was implemented beginning 2007-Q2.



Consolidated Tape Association

CTA Revenue Earned by Fee Type*

	Tape A					Tape B				
	Professional Subscribers	Non-Professional Subscribers	Non-Display	Quote Query	Other**	Professional Subscribers	Non-Professional Subscribers	Non-Display	Quote Query	Other**
1Q09	70.5%	11.8%		10.2%	7.4%	88.1%	9.7%		1.9%	0.3%
2Q09	69.0%	14.0%		9.6%	7.4%	81.1%	10.3%		3.0%	5.6%
3Q09	69.2%	13.0%		10.0%	7.7%	83.5%	10.1%		2.8%	3.6%
4Q09	70.6%	13.0%		8.3%	8.0%	83.4%	10.9%		2.4%	3.3%
1Q10	68.8%	12.3%		7.8%	11.0%	83.2%	9.4%		2.1%	5.3%
2Q10	67.1%	13.8%		8.8%	10.3%	81.9%	10.4%		2.7%	5.0%
3Q10	68.9%	11.6%		8.9%	10.7%	82.7%	9.6%		2.8%	5.0%
4Q10	68.4%	13.1%		7.9%	10.6%	81.5%	10.3%		3.1%	5.0%
1Q11	67.6%	13.3%		8.6%	10.6%	79.9%	11.9%		3.4%	4.8%
2Q11	68.0%	13.1%		8.0%	10.9%	79.4%	12.0%		3.6%	5.1%
3Q11	68.7%	12.4%		8.6%	10.3%	79.4%	12.3%		3.6%	4.7%
4Q11	70.3%	11.9%		7.8%	10.0%	80.0%	11.8%		3.5%	4.7%
1Q12	69.6%	12.5%		8.3%	9.6%	81.4%	11.4%		2.9%	4.4%
2Q12	70.1%	12.3%		7.7%	9.9%	77.6%	12.9%		4.8%	4.8%
3Q12	69.0%	12.5%		8.7%	9.9%	78.7%	12.1%		4.4%	4.7%
4Q12	69.1%	12.8%		8.4%	9.7%	78.0%	13.2%		4.0%	4.7%
1Q13	67.3%	13.4%		9.9%	9.4%	77.9%	12.4%		5.1%	4.6%
2Q13	66.7%	13.5%		10.3%	9.4%	78.5%	11.9%		5.1%	4.5%
3Q13	64.7%	14.2%		9.2%	11.9%	74.6%	13.0%		4.7%	7.7%
4Q13	60.3%	15.0%		8.4%	16.3%	67.8%	13.1%		4.9%	14.2%
1Q14	58.4%	15.4%		9.7%	16.5%	67.2%	13.7%		4.5%	14.6%
2Q14	57.7%	15.8%		9.5%	17.0%	64.0%	15.5%		4.9%	15.6%
3Q14	59.0%	15.7%		9.0%	16.4%	65.6%	15.1%		5.0%	14.3%
4Q14	60.1%	14.7%		9.4%	15.9%	66.0%	14.4%		5.1%	14.4%
1Q15	47.5%	14.0%	9.7%	12.5%	16.3%	56.5%	12.6%	8.4%	7.0%	15.5%
2Q15	48.3%	14.8%	10.0%	11.2%	15.7%	56.3%	14.0%	8.6%	6.1%	15.1%
3Q15	48.1%	14.7%	9.8%	11.9%	15.4%	56.1%	13.7%	8.6%	6.4%	15.2%
4Q15	48.8%	13.9%	9.6%	11.8%	16.0%	59.1%	13.0%	7.8%	5.1%	15.0%
1Q16	48.9%	14.5%	10.3%	10.3%	15.9%	59.1%	12.5%	8.3%	5.7%	14.4%
2Q16	49.2%	14.3%	10.3%	11.0%	15.2%	60.2%	12.2%	8.0%	6.1%	13.6%
3Q16	49.9%	14.8%	10.3%	9.7%	15.3%	60.0%	12.6%	8.0%	5.6%	13.8%
4Q16	50.1%	14.7%	10.4%	9.0%	15.8%	60.5%	12.5%	8.2%	5.0%	13.8%
1Q17	48.4%	15.8%	10.7%	9.8%	15.3%	59.1%	13.3%	8.6%	5.4%	13.6%
2Q17	48.9%	15.6%	10.6%	9.7%	15.3%	59.5%	13.1%	8.4%	5.2%	13.9%
3Q17	49.4%	15.6%	10.6%	9.1%	15.3%	60.0%	12.9%	8.5%	4.7%	13.9%
4Q17	52.3%	14.8%	9.7%	9.0%	14.1%	62.0%	12.7%	8.1%	4.3%	12.9%
1Q18	48.7%	16.8%	10.1%	10.0%	14.4%	57.5%	15.2%	8.4%	5.6%	13.3%
2Q18	51.1%	15.3%	10.7%	8.0%	15.0%	59.1%	13.6%	8.8%	4.6%	13.9%
3Q18	53.7%	13.5%	9.8%	8.9%	14.1%	60.2%	13.3%	8.4%	4.9%	13.2%
4Q18	53.2%	13.4%	10.0%	9.1%	14.2%	59.4%	13.3%	8.5%	5.2%	13.6%

* Percentages of Revenue Earned are independent of Distributed Revenue values.

** Includes revenues from Datafeed Access Fees, Redistribution Fees, and TV Ticker Fees.